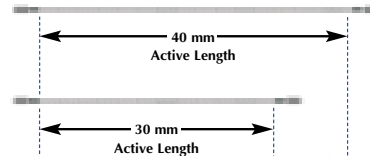


# *$\beta$ -Rail™ 3.5F Delivery Catheter Marker Positions*

## **Jacketed Radiation Source Trains (JRST)**

**NOTE:** Wire Jacket Not Shown



## **Catheter with Preloaded IST**

**NOTE:** IST = Indicator of Source Train

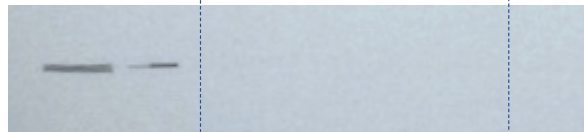


## **Fluoroscopic Images**

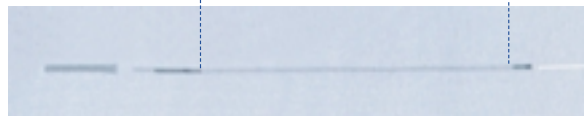
**Catheter with  
Preloaded IST**



**Catheter Only  
(IST removed)**



**Catheter with  
40 mm JRST in  
Treatment Position**



**The appropriate JRST length (30 or 40 mm) is selected by determining the entire injury length and desired margin.**



Best Vascular, Inc.  
4350 International Blvd, Suite A • Norcross, GA 30093  
Tel: +1 770-717-0904 • Fax: +1 770-717-1283

**1-800-NOVOSTE**  
**(1-800-668-6783)**  
[www.novoste.com](http://www.novoste.com)

© Novoste, Beta-Cath,  $\beta$ -Cath,  $\beta$ -Rail, the Beta-Cath System logo design and the Beta-Cath 3.5F System logo design are trademarks of Best Vascular, Inc. U.S. Patent Numbers 5,683,345; 5,899,882; 6,013,020 and 6,261,219. Other patents pending. © 2002 Best Vascular, Inc. All rights reserved.